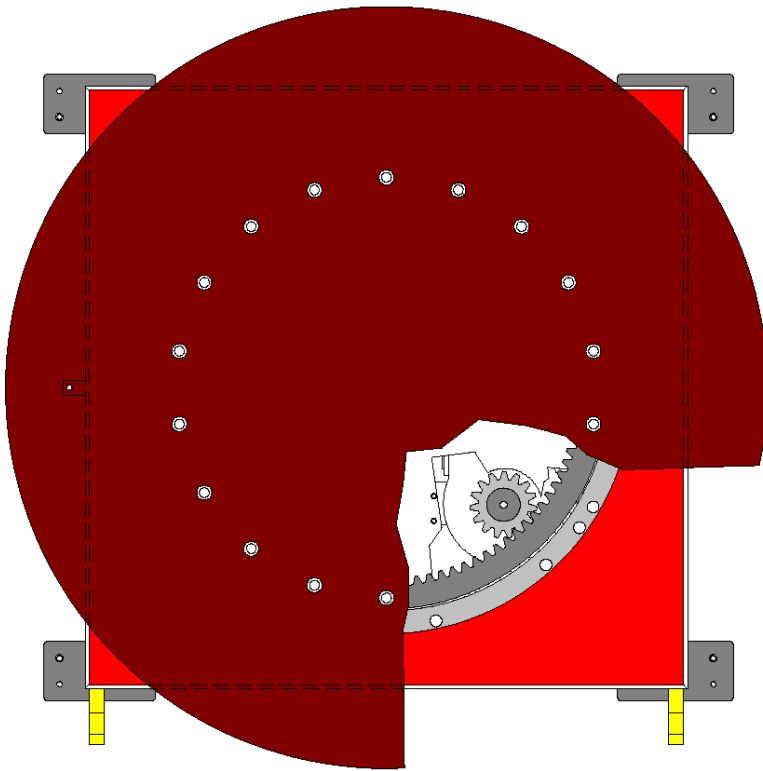
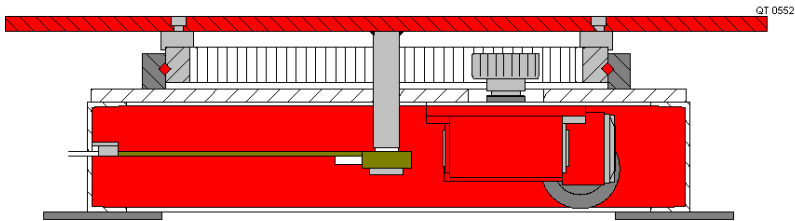


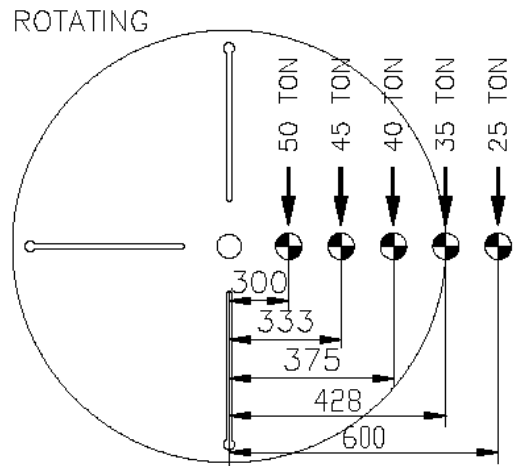


Specification Data
Horizontal Turntable
Capacity: 50 Tonnes
Model: RTT50T

A&N Horizontal Turntable Model RTT50T is fully tempered after welding before precision machining of 4 x parallel slots or concentric ring markings and pilot center hole. The base frame is constructed from heavy duty structural steel designed for rigidity and provides protection to the gearing system. The gearing system is located internally and offers unsurpassed safety to the operator. An AC Motor controlled by the latest Inverter control box provides infinitely variable speed control. The table is bolted to a heavy-duty thrust bearing, which can be lubricated externally via a lubricant duct, thus providing ease of maintenance. Control is via a low voltage push button controller offering the following functions; control, forward/reverse, stop/start, variable speed potentiometer.



LOADING CHART



Specification

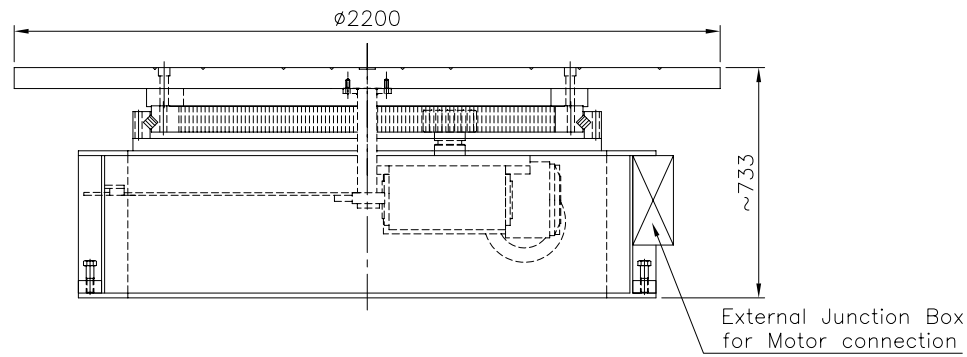
- 50 metric ton at 300mm at eccentricity
- Rotation speed at 0.01-0.77 rpm
- Single pinion drive
- 7.5Kw drive control system inverter type
- Input supply: 400V/3Ph/50Hz (available on international voltage).
- Rotary ground clamp 1200amps
- Pendant control, push button type with 15 metre control leads

Ordering Information and system checklist

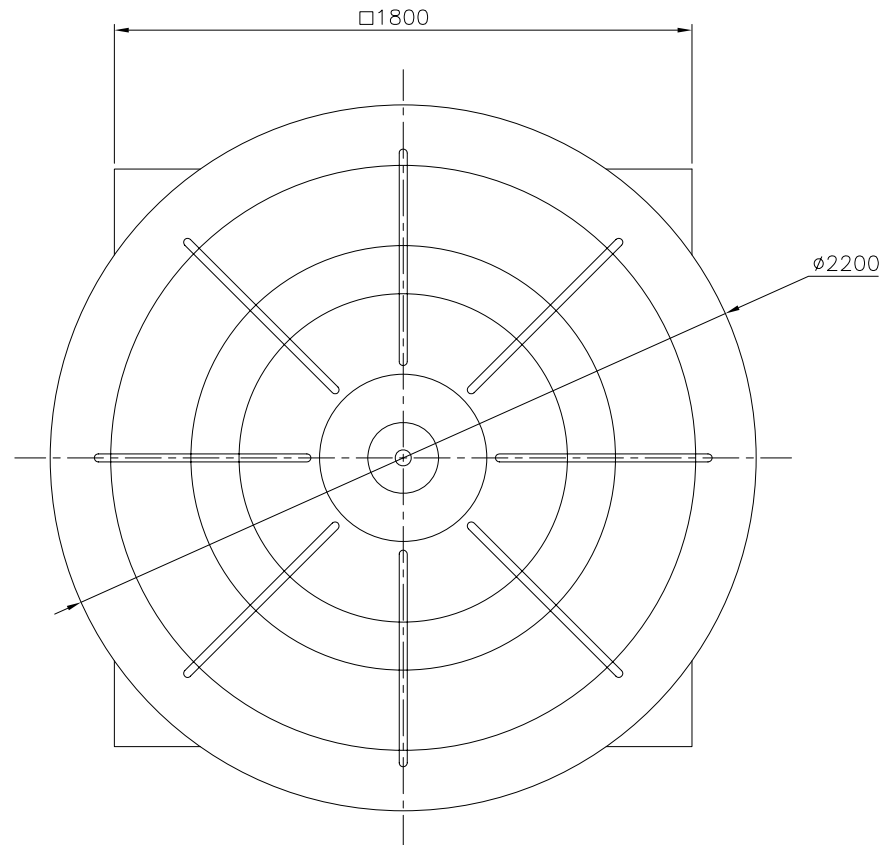
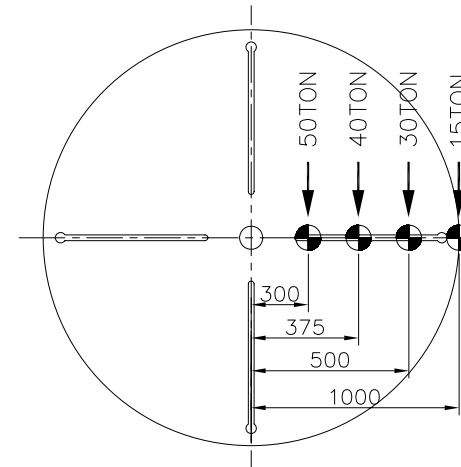
Equipment	Part Number	Description	
Turntable	RTT50T-	50 metric ton turntable	
Built-in with	EA-	3-phase AC motor, Pendant control with 15m cable.	Standard
Table	D1200-	A round table with diameter of 1200mm	Standard
	D1500-	A round table with diameter of 1500mm	Optional
	D1800-	A round table with diameter of 1800mm	Optional
	D2400-	A round table with diameter of 2400mm	Optional
	S1200-	A square table with length of 1200mm	Optional
	S1500-	A square table with length of 1500mm	Optional
	S1800	A square table with length of 1800mm	Optional
	S2400	A square table with length of 2400mm	Optional
Optional item	/E	Encoder	Optional
	/T	Tachometer	Optional
	/P	Dual pinion gear	Optional


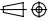
Specification for Turntable

1	Model	RTT50T-XA-D2200
2	Safe working Load	50 Ton at 300mm off-centre
3	Table Diameter	2200mm
4	Rotation Speed	0.776rpm at 50Hz (7.5kw c/w Force Cooling)
5	Electrical Panel	No
6	Power Supply	N.A.
7	Control Means	N.A.
8	Surface Preparation	Gritblast to SA2.5
9	Painting	2 coats Zinc Phosphate, 1 coat Polyurethane
10	Color	RAL 3003 Red
11	Qty	1 unit



RTT50T-P LOADING CHART



 A&N PLANT <small>ROTATORS - COLUMN BEAMS - POSITIONERS</small>			PROJECT/MODEL : RTT50T-XA-D2200	
CLIENT : A&N PLANT			 SCALE: N.T.S. REVISION: 0 SHEET NO: 1 OF 1	
DWG. NAME : GENERAL ARRANGEMENT				
DWG. NO. : AN-3487-GA15				
<small>THE ORIGINAL AND ALL COPIES OF THIS DRAWING TOGETHER WITH THE COPYRIGHT THEREOF ARE THE SOLE PROPERTY OF R.P.E. PTE. LTD. SINGAPORE</small>				