

Specification Data
Pipe Shop Column & Boom
Manipulator
1.8 x 1.5 metres

The **A&N** Pipe Shop series Column & Boom Manipulators are specially designed with 360degree rotation. Vertical Lift is achieved via an AC Motor along fully machined guide rail through worm gearbox with self-locking features. Boom Traverse is achieved via a precision rack & pinion with manually adjustable hand wheel along fully machined guide rail. Non-powered travel car is fitted for rail mounting and easy positioning throughout the workshop.

The control box is fitted with push buttons to operate the raise and lower functions of the Boom Arm, Power on light, E-Stop and Interlocking Isolator.

- Micro-joystick for motorized X-Y slide (**optional**).



..... www.anplant.com

Pipe Shop Column & Boom RM1815 LLS

Specification

Input Voltage: 3-Phase Voltage (Specify 3 –phase voltage requirement before ordering)			
Electrical Box: IP55 code			
Vertical Travel Speed: 500mm/min			
Boom Travel Speed: manual hand wheel			
Fixed Base Carriage (Standard) or non-powered travel car			
Model	Horizontal Boom Arm Travel (mm)	Max Overall Height (mm)	Maximum Height Under Boom (mm)
RM1815 VLS	1500	2278	1800

Ordering Information Checklist

Equipment	Part Number	Description	
Pipe Shop Column & Boom	RM1815LLS	1.8 x 1.5 metre Pipe Shop Column & Boom	
Base	[Blank] TC-	Fixed base Travel car Manual *Advise factory for detail track gauge	Standard Optional
Electrical Control	EA- SA-	Panel & 3-phase AC motor Panel, step-over & 3-phase AC motor	Standard Optional

GA drawing also available

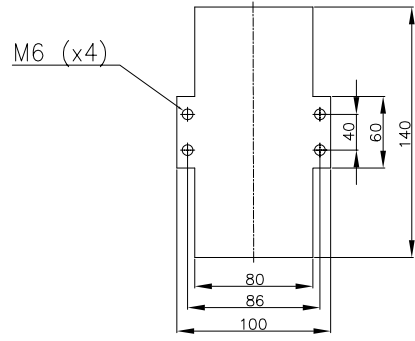


..... www.anplant.com

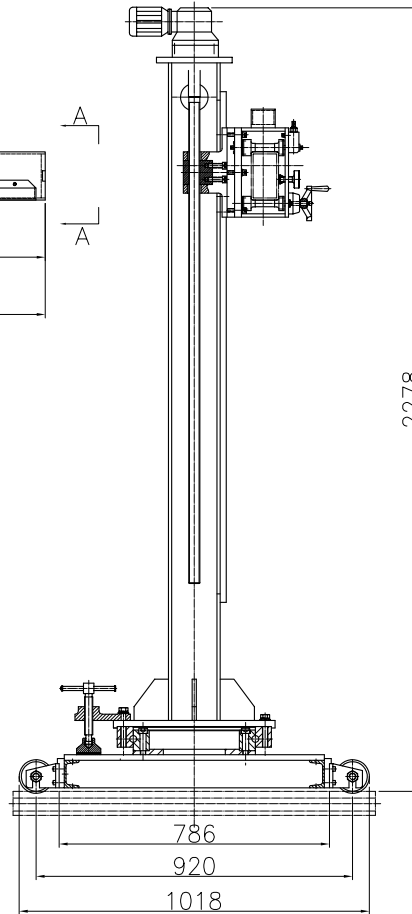
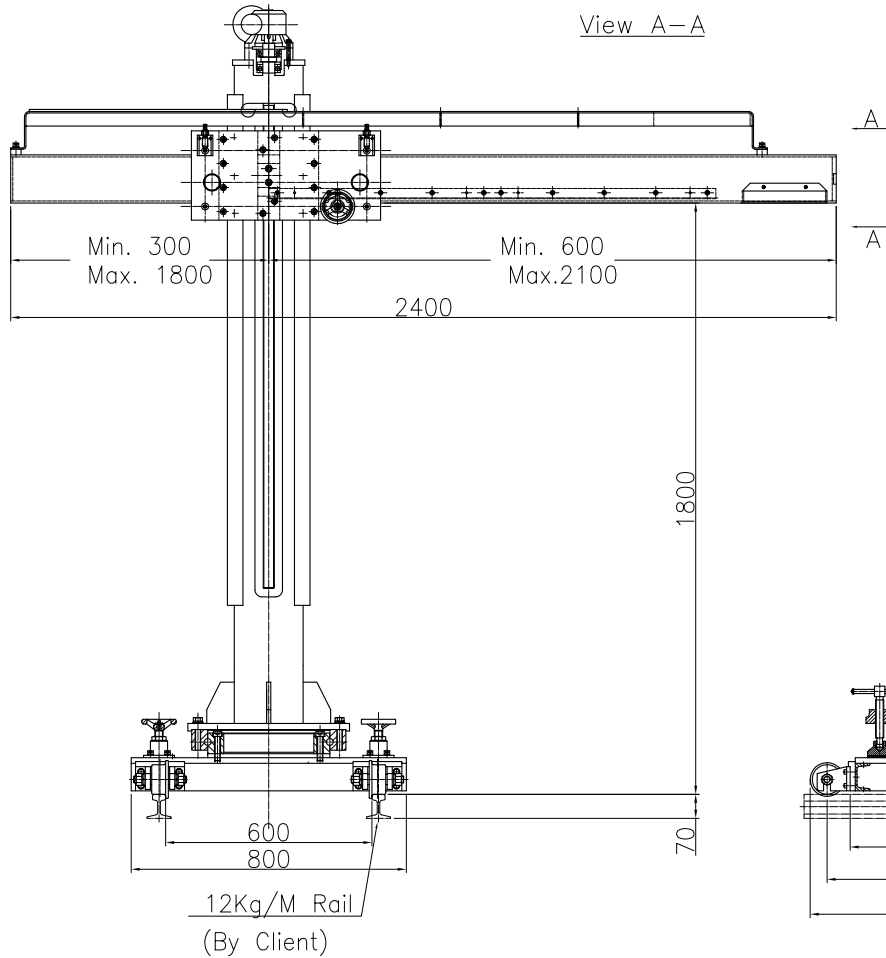
Pipe Shop Column & Boom RM1815 LLS

Specification for Rotator


1	Model	RM1815LLS-TC-XA-G600-Z
2	Max. Under Boom Height	1800mm
3	Effective Boom Travel	1500mm
4	Vertical Speed	500mm/min running at 50Hz
5	Boom Speed	N.A
6	Travel Speed	N.A
7	Vertical Drive	0.55Kw c/w Brake
8	Boom Drive	manual Handwheel via Rack and Pinion
9	Electrical Panel	No
10	Travelcar Drive	Manual
11	Travelcar Speed	N.A.
12	Rail G-G	600mm
13	Slewing Feature	Manual 360°
14	Slewing Drive	N.A
15	Flux Recovery	No
16	Power Supply	N.A.
17	Control Voltage	N.A.
18	Surface Preparation	Gritblast to SA2.5
19	Painting	2 Coats Zinc Phosphate, 1 Coat Polyurethane
20	Colour	RAL 3003 Red
21	Qty	4 units



View A-A



ALL DIMENSIONS IN MM, UNLESS OTHERWISE SPECIFIED.

 A&N PLANT <small>ROTATORS - COLUMN BOOMS - POSITIONERS</small>		PROJECT/MODEL : RM1815LLS-TC-XA-G600-Z	
DRAWN : NAME : Kris DATE : 02-06-06		CLIENT : A&N Plant	
APPROVED :		DWG. NAME : General Arrangement	
		DWG. NO. : PJ-3487-GA16	
		SCALE: N.T.S REVISION: 2 SHEET NO: 1 OF 1	
THE ORIGINAL AND ALL COPIES OF THIS DRAWING TOGETHER WITH THE COPYRIGHT THEREOF ARE THE SOLE PROPERTY OF R.P.E. PTE. LTD. SINGAPORE			