



**Specification Data**  
**Conventional Rotators**  
**Capacity : 150 tonnes**  
**MODEL: PRSE 150/150 MYM-TCM**  
**Motorised Travel Car & Motorised**  
**Lead Screw**

**A&N** rotators are a robust heavy duty design built to withstand the harsh and rugged environments expected in the welding and fabrication industry. Our proven design uses 630mm diameter 270mm width, steel wheels crowned and hardened mounted onto a cast steel drum for durability and superior traction.

The powered drive unit drives all wheels synchronized using the AC gear motors via the latest inverter control. A hand held low voltage control pendant on a 15-metre cable provides the operator with full control of the rotator including a potentiometer for varying the speed, forward/reverse and stop.

The rotator has a standard 3450mm skid and can accommodate vessel diameters ranging from 500mm to 4600mm. All **A&N** rotators are grit blasted to SA 2.5 for all structural steel and polyurethane paintwork ensuring that your investment provides you with many years of reliable, trouble-free use.

The idler roll has the same dimension to match the powered drive unit. See GA drawing attached.

**Power rolls specifications**  
**Fitted with Steel Wheels**

Model:	PRSE 150/150 MYM-TCM
Load Capacity:	150 metric ton (1 power & 1 idler)
Turn Capacity:	150 metric ton (1 power)
Roll Speed:	125 to 1250 mm/min
Vessel diameter:	Min 500mm to max 4600 mm (4600mm @ 45 degree included angle)
Incoming supply:	400V/3Phase/32Amps/50/60/hz. (Specify input voltage when ordering)
Motor rating:	Rotation 2 x 3KW AC Drive Leadscrew 1 x 3KW AC Drive Travel Car 2 x 2.2KW AC Drive
Control voltage:	DC 24 Volt control circuit.



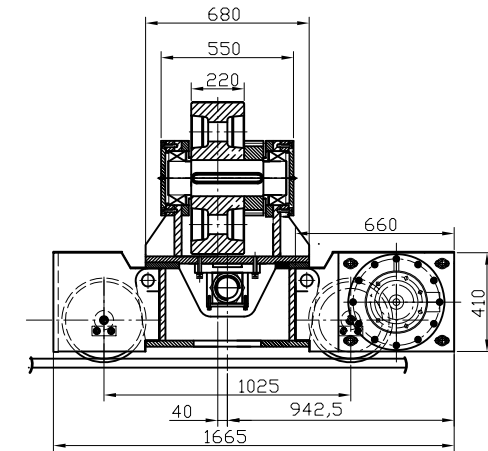
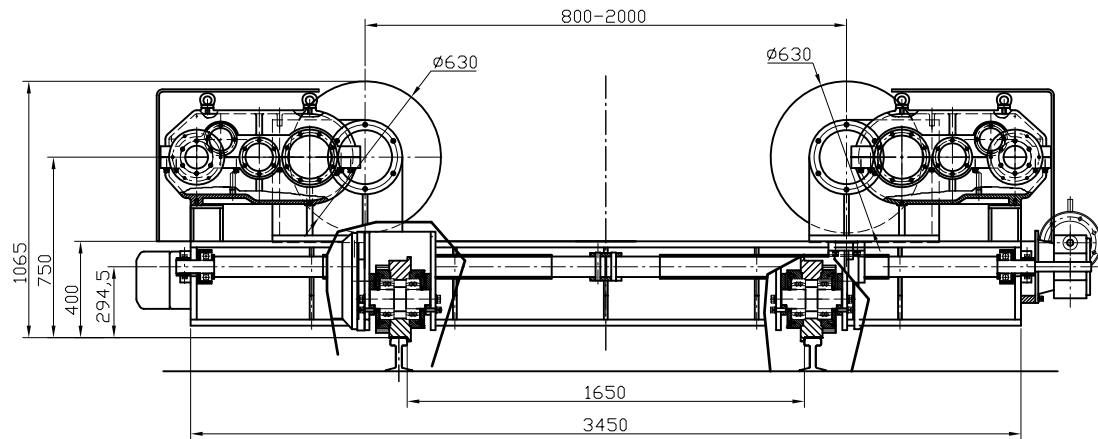
- Includes motorised travel car for rail mounting
- Includes motorised leadscrew wheel adjustment

..... [www.anplant.com](http://www.anplant.com) .....


PRSE 150/150 MYM-TCM (150 Tonne) (Steel Wheeled)

Specification for Rotator

1	Model	PRSE150/150DMYM-TCM-EA-2000/G1650
2	Capacity (Loading)	75 Ton
3	Capacity (Turning)	150 Ton
4	Vessel Size	Ø500-5000mm
5	Vessel Size at C-C 800	Ø1460 at 45° Included Angle
6	Vessel Size at C-C 2000	Ø4600 at 45° Included Angle
7	Roller Type and Size	Steel, Ø630 x 220mm
8	Electrical Panel	Yes
9	Incoming Supply	400V-3P-50Hz
10	Control Voltage	24Vac
11	Roller Speed	125-1250mm/min at 5-50Hz
12	Roller Drive Control	7.5KW AC Inverter
13	Roller Drive Motor	2 x 3KW AC c/w Forced Cooling
14	Force Cooling Fan Supply	440V-3P-50HZ
15	Leadscrew	Motorised
16	Leadscrew Speed	870mm/min
17	Leadscrew Drive	3KW with Brake
18	Travelcar (Bogie)	Yes, Motorised
19	Travelcar Speed	3000mm/min
20	Travelcar Drive	2 x 2.2KW with Brake
21	Brake Supply	230V-1P-50HZ
22	Control Means	Via Push Control Pendant c/w 10m cable
23	Surface Preparation	Gritblast to SA2.5
24	Painting	2 coats Zinc Phosphate, 1 coat Polyurethane
25	Color	RAL5015 Blue
26	Qty	2 units

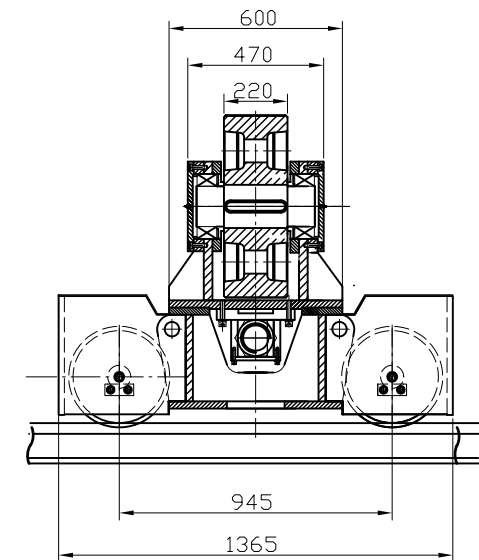
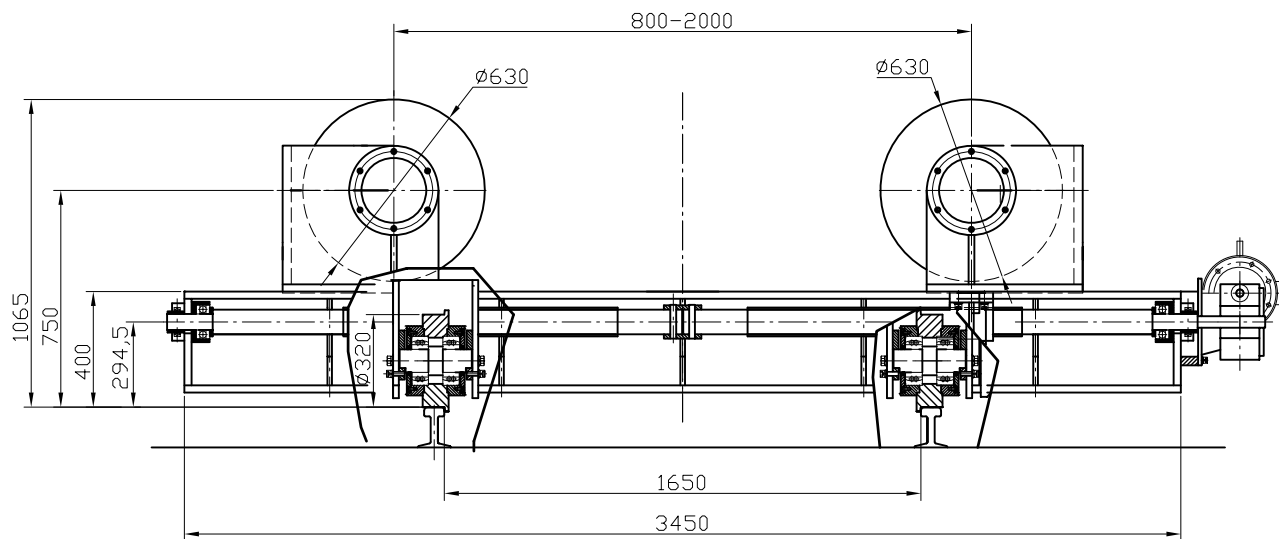


ALL DIMENSIONS IN MM, UNLESS OTHERWISE SPECIFIED.



 <b>A&amp;N PLANT</b> <small>ROTATOR - COLUMN BEAMS - PARTS</small>		PROJECT/MODEL :		PRSE150/150DMYM-TCM-EA-2000/G1650	
		CLIENT :			A & N PLANT
DRAWN	NAME	DATE	DWG. NAME :		ROTATOR GENERAL ARRANGEMENT
	Robin.T	29-06-07	DWG. NO. :		
APPROVED			AN-4087-GA01		
THE ORIGINAL AND ALL COPIES OF THIS DRAWING TOGETHER WITH THE COPYRIGHT THEREOF ARE THE SOLE PROPERTY OF R.P.E. PTE. LTD. SINGAPORE					

Specification for Rotator

1	Model	IRSE150YM-TC-EA-2000/G1650
2	Capacity (Loading)	75 Ton
3	Capacity (Turning)	N.A.
4	Vessel Size	ø500-5000mm
5	Vessel Size at C-C 800	ø1460 at 45° Included Angle
6	Vessel Size at C-C 1600	ø4600 at 45° Included Angle
7	Roller Type and Size	Steel, ø630 x 220mm
8	Electrical Panel	Yes
9	Incoming Supply	400V-3P-50HZ
10	Control Voltage	24Vac
11	Leadscrew	Motorised
12	Leadscrew Speed	725mm/min
13	Leadscrew Drive	3KW c/w brake
14	Brake Supply	230V-1P-50Hz
15	Travelcar (Bogie)	Yes, Manual
16	Travelcar Speed	N.A.
17	Control Means	Via Push Button Control c/w 10m cable
18	Surface Preparation	Gritblast to SA2.5
19	Painting	2 coats Zinc Phosphate, 1 coat Polyurethane
20	Color	RAL5015 Blue
21	Qty	2 units



ALL DIMENSIONS IN MM, UNLESS OTHERWISE SPECIFIED.

 <b>A&amp;N PLANT</b> <small>ROTATORS - COLUMN BEAMS - POSTTENSIONERS</small>		PROJECT/MODEL : IRSE150YM-TC-EA-2000/G1650	
CLIENT : A & N PLANT			
DRAWN : Robln.T	DATE : 29-06-07	DWG. NAME : ROTATOR GENERAL ARRANGEMENT	SCALE: N.T.S.
APPROVED :		DWG. NO. : PJ-4087-GA02	REVISION: 0
			SHEET NO: 1 OF 1
THE ORIGINAL AND ALL COPIES OF THIS DRAWING TOGETHER WITH THE COPYRIGHT THEREOF ARE THE SOLE PROPERTY OF R.P.E. PTE. LTD. SINGAPORE			